

features

DENVER REVISION + A VERY PERSONAL RECONSTRUCTION + BOULDER FACE LIFT + CHERRY HILLS REMODEL

Fresh Take Whenever possible in this Denver home, Miranda Cullen of Duet Designs repurposed furnishings, such as this chair in the corner of the family room. Jaya Marseille fabric by Vervain rejuvenates the carved-wood piece, and the footed Felix stool is from Arteriors. The contemporary artwork from the homeowners' collection provides the desired youthful balance. »

BEFORE & AFTER

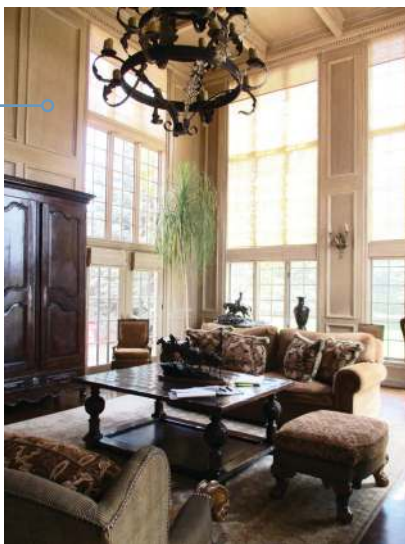
DENVER REVISION

Duet Designs **INFUSES
NEW LIFE** into a woman's
childhood home, making it
a lighter, brighter haven for
raising her own family.

Story by MINDY PANTIEL

Photography by EMILY MINTON REDFIELD

BEFORE AFTER





« *Family Room* “The designer put the word *family* back in the family room, where a Precedent sectional and chaise invite conversation, and Caracole ottomans do double duty as footrests and toy storage. Errant Legos can also be stashed in baskets under the existing console tables, where the Gosselin lamps are from Gabby Home. Come nightfall, a Visual Comfort chandelier casts a warm glow.

BEFORE & AFTER



BEFORE

≈ *Fireplace* Glass vases on metal stands by 3R Studios line the living-room fireplace. The designer turned tables that once belonged to the homeowner's grandmother into stools with cushions wearing Romo fabric and Samuel & Sons welts and tassels. The geometric Stanton rug adds a contemporary touch.

AFTER



BEFORE

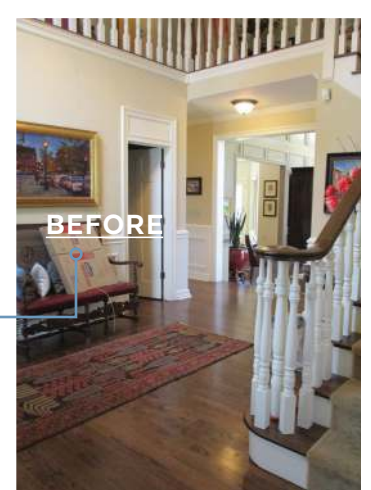
Yankee baseball Hall of Famer Yogi Berra once notably opined, “It’s déjà vu all over again,” which likely describes the way the current occupant of a Denver residence feels every time she comes through door. “We bought my childhood home,” says the wife, who grew up in the traditional colonial with two brothers, only to return with her own two sons and a daughter, all under the age of 8. “Setup-wise, it was a perfect fit,” she adds. But design-wise, not so much. Classic good bones aside, the red dining-room walls and a crackle finish in the family room, coupled with a pervasive darkness, lacked the vitality of the next generation. The family tapped Duet Design Group to lead the transformation. Duet co-founder Miranda Cullen recalls, “We wanted to respect her parents’ choices while allowing the personality of a young family to shine through.”

AFTER

“The goal was to be light and bright versus traditional and heavy,” says Cullen, who, along with business partner Devon Tobin, refreshed the family room with coats of creamy white, followed by grayish green over red in the dining room. Whenever possible, they repurposed—reupholstering the living-room sofa in linen and topping the owner’s grandmother’s low tables with cushions to make benches. A new wingback touting a bold floral establishes a classical-meets-whimsical vibe, while a variety of new seating options in the family room—comfy sectionals ottomans and coffee-table-height stools—redefine the gathering space. But the real bonus, the owner says, was the déjà vu moment of “going from being the child playing in the yard where my mother watched from those big windows to being the mom who watches my own kids.”



AFTER



BEFORE

» *Entry* “We wanted to create a moment of pause, and the previous use of a bench and rug in the open foyer didn’t welcome you,” says designer Miranda Cullen, whose introduction of functional pieces like the Rooster Socks Furniture corner chair—a spot for removing shoes—combined with decorative elements like a Louis XV reproduction desk by Theodore Alexander, remedied the situation. Tufted ottomans from Highland House untuck from the latter to provide extra seating, and a Surya rug lightens the space. »

BEFORE & AFTER

» *Vignette* “We actually purchased these chairs for our old home and transitioned them here,” the homeowner says





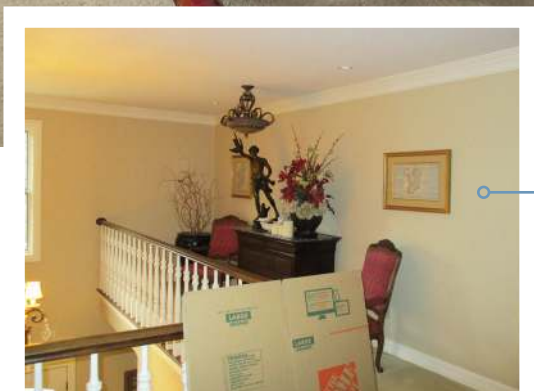
« *Powder Room* "This room has received more attention than a lot of our designs," Cullen says. Easy to see why, with the show-stopping Ellie Cashman Design wallpaper updating the previously upholstered walls. The Gramercy single metal washstand, classic wall mirror and aged brass faucets, all from RH, keep the drama going. "It still has a traditional aesthetic, but now it's light and bright," Cullen adds. »

— AFTER

BEFORE



BEFORE & AFTER



AFTER

BEFORE

≈ *Upstairs Hall* “There was just a blank wall there before,” says Cullen about the space on the second floor landing that has a renewed sense of purpose, thanks to the addition of new bookcases, painted Sherwin-Williams Seaworthy. The books, art, collectibles and stools are from the owners’ collection.

AFTER



BEFORE



“We wanted to respect her parents’ choices while allowing the **PERSONALITY OF A YOUNG FAMILY** to shine through.”

— MIRANDA CULLEN

INTERIOR DESIGNER
DUET DESIGN GROUP
MIRANDA CULLEN
DEVON TOBIN
DUETDESIGNGROUP.COM

≈ *Backyard* Outside, the stately brick home the family purchased from the wife’s parents was perfect as is. The outdoor dining room gets regular use from the owners, their three young children and two Great Danes. ❖



≈ *Master Bedroom* A Sferra duvet and euro shams, a Dea coverlet, and a Kevin O’Brien Studio hand-painted velvet lumbar pillow, all from The Brass Bed, bring a sophisticated and tailored edge to the bed in the master. Cullen used an existing rug but replaced the carpet and added a Domaine Blanc bachelor’s chest from Bernhardt with a dove-white finish as a nightstand. The lamp is by Robert Abbey.